

Delivering the upper extremity rehabilitation needs to recover functional use of the arm



Versatile • Effective • Empowering



- Supports efforts to regain independence
- Light weight, portable and easy to use
- Provides a cost effective means to achieve treatment goals
- Equip yourself proactively amidst healthcare changes

"Years of regular PT/OT have gotten me a range of about 90-120 degrees with my arm and shoulder. Yesterday, I "grabbed" cones off of a shelf above my head using my stroked arm! Do you hear me? Less than a month of stretching and exercises using the UE Ranger and I lifted my stroked arm above my head. I barely held tears in. For neuro rehab, which has been as slow as watching snot freeze, it blew me away to see such incredible results in my range of motion and strength in such a short time compared to the fight I have had thus far for just a few degrees! Oh I wish I had been introduced to the UE ranger right after my strokes. I honestly can't imagine where I would be now if I had. This is a tool that every survivor needs. It provides a stretch that I previously only got when a therapist would stretch my arm. In the world of PT equipment and all the junk we accumulate in an attempt to gain back what we had, this is one investment that will prove that you can continue to improve if you use it with commitment."

Kendra Drummond Stroke Survivor

The UE Ranger®

VERSATILE • EFFECTIVE • ESSENTIAL

AN INSTINCTIVE TRUST

Matching the fluidity of human motion while unloading the healing upper extremity, the UE Ranger promotes trust within the central nervous system. An optimal physiological state provides the opportunity to resolve the depth of movement health impairments.



HEALING DYNAMICS NATURALLY IN SYNC

Therapeutic Threshold - When in which any intended intervention actually is producing a therapeutic influence from which the body can respond favorably versus supporting or perpetuating compensation.

THERAPEUTIC SUPPORT

When a therapist recognizes the need to intervene with an external support, its greatest value is achieved when normal movement production is left unimpeded and the individual's greatest current physical capacities are enhanced.



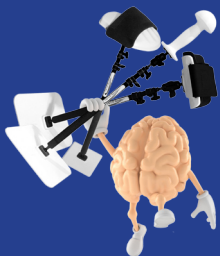
EMPOWERING OPPORTUNITY WITHIN PREVIOUSLY UNTAPPED DEPTHS OF HEALING

Subtleties Matter! Establish the ability to therapeutically communicate WITH a patient's nervous system versus battling against its protective nature.

WE BELIEVE IN EQUIPPING TO FULFILL THE POSSIBILITIES

Refining the Art of Healing

The UE Ranger



Providing a Harmony of Healing Support and Functional Recovery

HEALING MOTION - A LASTING IMPRESSION

The UE Ranger's sensitive support fosters neuromuscular based strengthening producing a graded continuum of recruiting small motor units, progressively to larger ones. Restores the weakest of the weak for optimal coordination, strength and endurance recoveries, in the clinic and at home.



INCREDIBLE VERSATILITY OFFERS FREEDOM FROM CURRENT NEEDS TO IMPROVISE

The UE Ranger meets each patient at their personal impairment level. Offering a continuum of healing influences resulting in per person optimal outcomes.

LIMITLESS CAPACITIES

Finally a tool that allows you to utilize your knowledge and skills to achieve optimal outcomes. The UE Ranger's influences truly are limited by your imagination only.



EVIDENCE BASED PRACTICE

We are proud to share that the UE Ranger's designed applications meet evidence based practice standards by being grounded in science, independently researched and thus ultimately advance our professional capacities. Studies can be viewed on our website.



"We have been using the UE Ranger in my practice for over 7 years and it is a wonderful device for increasing mobility - not only in the shoulder but also the elbow. It works for post RC repair, frozen shoulder, post-mastectomy chest wall sensitivity & movement restriction or any condition that is limiting any Upper Extremity movement. It is a tremendous confidence booster for patients and thus shortens the total rehab time. They also have helpful videos for its versatile applications in different conditions. It is economical and very easy to install and use with a great return on investment. I highly recommend this device for any PT or OT clinic." –Dhaval Buch, PT

"Using the UE Ranger with my stroke and brain injury patients I am able to facilitate alignment and engage my patients UE from low level weight bearing to high level functional use, allowing for arm on body movement and graded control." –Debra S Ouellette, MS, OTR/L, BCPR, SCLV

ueranger.com

Recovering from a neurological impairment is not easy and more rehabilitation often equals more recovery.

**We can help
This is how...**

The UE Ranger is therapeutically diverse and offers many rehabilitation solutions to explore.

Empower your patients to achieve their recovery goals!



Establishing the ability to therapeutically communicate WITH a person's nervous system versus battling against its protective nature offers a refreshingly freeing means of healing most effectively and efficiently

Using the UE Ranger with my stroke and brain injury patients I am able to facilitate alignment and engage my patients UE from low level weight bearing to high level functional use, allowing for arm on body movement and graded control.

Debra S Ouellette, MS, OTR/L, BCPR, SCLV

The UE Ranger permits the patient to perform PROM or AAROM exercises as instructed by the therapist throughout the day. This greatly assists the mobility and comfort of the shoulder by frequent gentle exercise sessions rather than limited to therapy 3x per week. My clients enjoy having some control over their rehabilitation and I have found their compliance to be encouraging, their pain level to be reduced and their satisfaction increased.

Pam Johnson PT

As a neurologically based occupational therapist, gravity is my enemy. It is so difficult for me to assist my patients in moving in different planes with minimizing the impact of gravity. The UE Ranger has assisted in overcoming this battle. The flexibility of the joints and open hand position allow my clients more degrees of freedom in movement and allow them the opportunity to learn how to self correct. Not only is the UE Ranger a key tool in the clinic, it is an option for home use as well. I have seen many upper extremity ROM tools and the value in the UE Ranger is not matched.

Michelle Mioduszewski, MS, OTR/L



View demonstration
videos at
www.ueranger.com